

HACCP conveyor and process belts for meat & poultry

CHIORINO manufactures conveyor and process belts that fully comply with the latest European and international Food Regulations, and are particularly recommended for the **HACCP system**.

The wide range of CHIORINO food belts is developed to satisfy all demanding applications in meat & poultry, assuring the **highest safety** and **hygiene**.



Certified Food Compliance

To protect Consumer's health, CHIORINO process and conveyor belts comply with the latest European and international Food Regulations:

REGULATION EC 1935/2004 and amendments

REGULATION EC 2023/2006 and amendments

REGULATION EU 10/2011 and amendments

FDA (Food and Drug Administration)

REGULATION NSF/ANSI 3-A 14159-3-2014 and amendments

USDA (United States Department of Agriculture)

HALAL (World Halal Authority)

The careful selection of raw materials, the constant adjustment by R&D Department to the legislative developments in food safety, the strict controls throughout the production process (Good Manufacturing Practices) guarantee total food compliance of CHIORINO belts.

Declarations of compliance as prescribed by law are available for every CHIORINO food belt.

Thus, the Customers are certain to use materials that fully comply with the HACCP system.



Leading brand for hygiene and food safety



The HP® conveyor and process belts are the benchmark in the food industry as far as **hygiene, performance** and **working life** are concerned.

The HP® belts fully support all the **HACCP procedures** through the whole food manufacturing process.

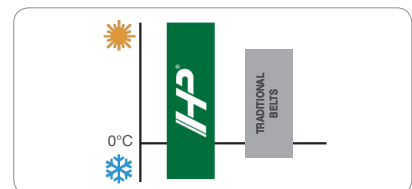


+ BENEFITS

- **Total respect of the HACCP system**
- **Non staining**
- **Easy to clean**
- **Time, water and energy saving**
- **Long service life**

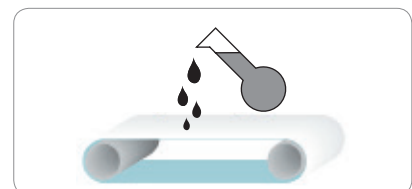
Resistance to high/low temperatures

The HP® belts offer increased resistance to high temperatures compared to traditional polyurethane belts and maintain their characteristics even at lowest temperatures.



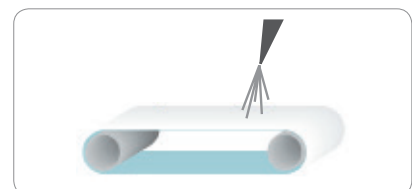
Resistance to oils and chemical agents

The HP® belts ensure an excellent resistance to the chemical agents, fats and aggressive oils, including sunflower, palm and coconut oil.



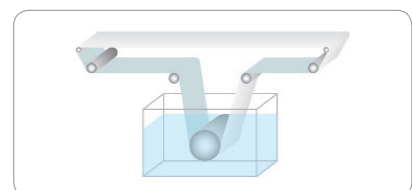
Resistance to hydrolysis

The HP® belts guarantee an excellent resistance to hydrolysis as well as the chemical and mechanical action of washing with hot water and steam, including in continuous systems.



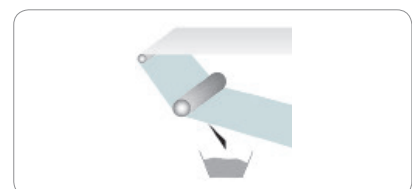
Clean-in-place

HP® belts can be subjected to continuous washing systems with hot water and detergents without undergoing any deterioration.



Superior flexibility and mechanical resistance

The HP® belts offer a superior flexibility and are extremely resistant to abrasion and mechanical stress caused by knife edges, backflexing and scrapers.



Ultimate positive drive belt



HP COMPACT® is a homogeneous conveyor and process belts - smooth or positive drive - assuring **total hygiene** and designed to resist the most severe **cleaning procedures**.

It goes beyond the application limits of both modular and monolithic belts, reinforced or not, commonly found in the market.



+ BENEFITS

- Total food safety
- Superior resistance to washing and sanitizing
- Excellent resistance to fats and oils
- Self-tracking
- Optimized cost of ownership

Accuracy and precision



HP COMPACT MINI DRIVE® is the ultimate solution for **food positive drive** belts featuring a **reduced teeth pitch**.

Ideal for running on small pulleys, it assures **smooth product transfer** and **increased production efficiency**.



+ BENEFITS

- Accurate product transfer
- No mistracking. No misalignements
- Suitable for bi-directional running
- Ideal for high speed
- Optimized cost of ownership

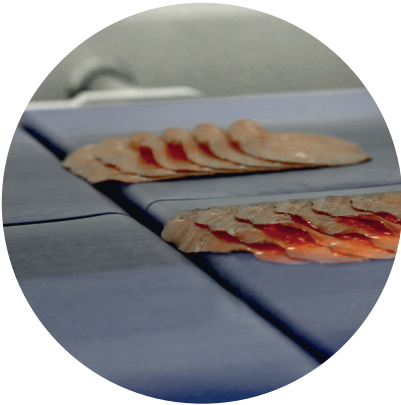
Detectable solutions for contamination-free food



Chiorino DET™ is a full range of **food grade metal detectable** products.

The exclusive DET™ TPU belt is **recognized** in very **small particles** by the metal detectors used in food processing and packaging.

Chiorino DET™ line guarantees a **safest food production** and **prevents products recalls**.



+ BENEFITS

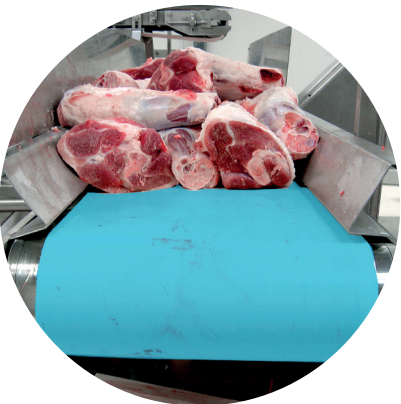
- **Guaranteed food safety**
- **No food contamination**
- **Waste reduction**
- **Prevents product recalls**
- **Long service life**

Heavy duty reliable thick belts



The Food Duty™ line of **high thickness polyurethane** belts has been designed to overcome the **limits** of the current **PVC belts** for heavy-duty applications in the food processing industry.

The polyurethane cover of Food Duty™ belts ensures **higher performances** and **greater hygiene** levels compared to PVC belts.



+ BENEFITS

- **Guaranteed food safety**
- **Highest resistance to fats and oils**
- **Excellent reliability**
- **Reduced maintenance costs**
- **Long service life**

Meat



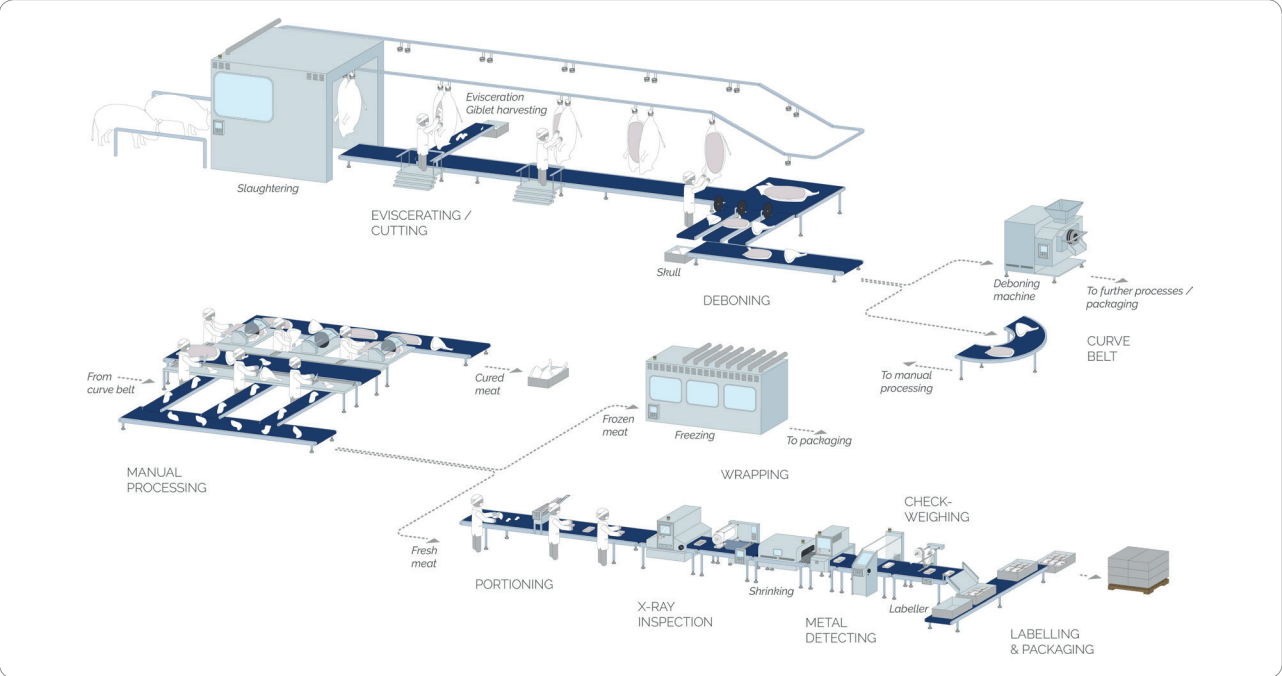
KEY FEATURES

+

BENEFITS

- | | |
|---|--|
| Excellent resistance to cut and abrasion | > Highest reliability even with scrapers |
| Superior resistance to aggressive fats | > Resistance to ageing and long service life |
| Superior sanitizing and cleaning resistance | > Less bacteria proliferation |
| Resistance to low temperatures | > Long service life |

Industrial line for meat processing



Poultry



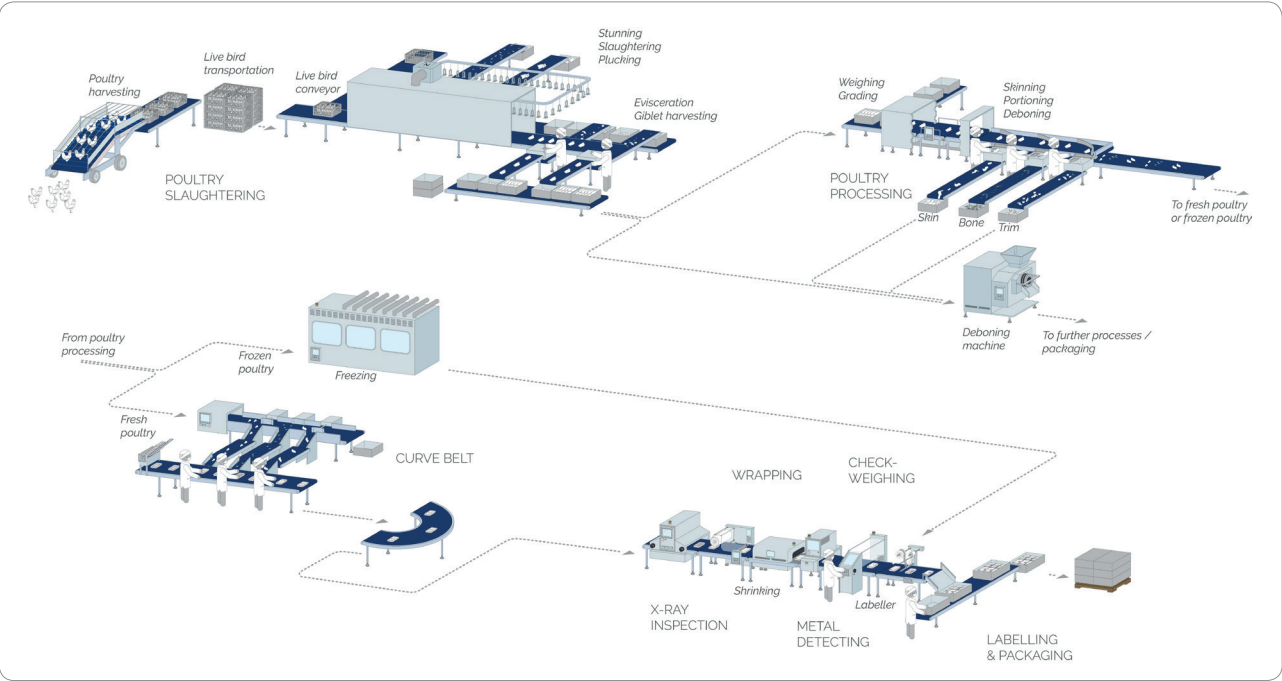
KEY FEATURES

+

BENEFITS

| | | |
|--|---|---|
| Superior resistance to aggressive fats | > | Resistance to ageing |
| Superior sanitizing and cleaning resistance | > | Total food safety |
| Excellent resistance to sharp impacts and abrasion | > | Highest reliability and less product waste |
| Resistance to low temperatures | > | Long service life |

Industrial line for poultry processing



Slicing



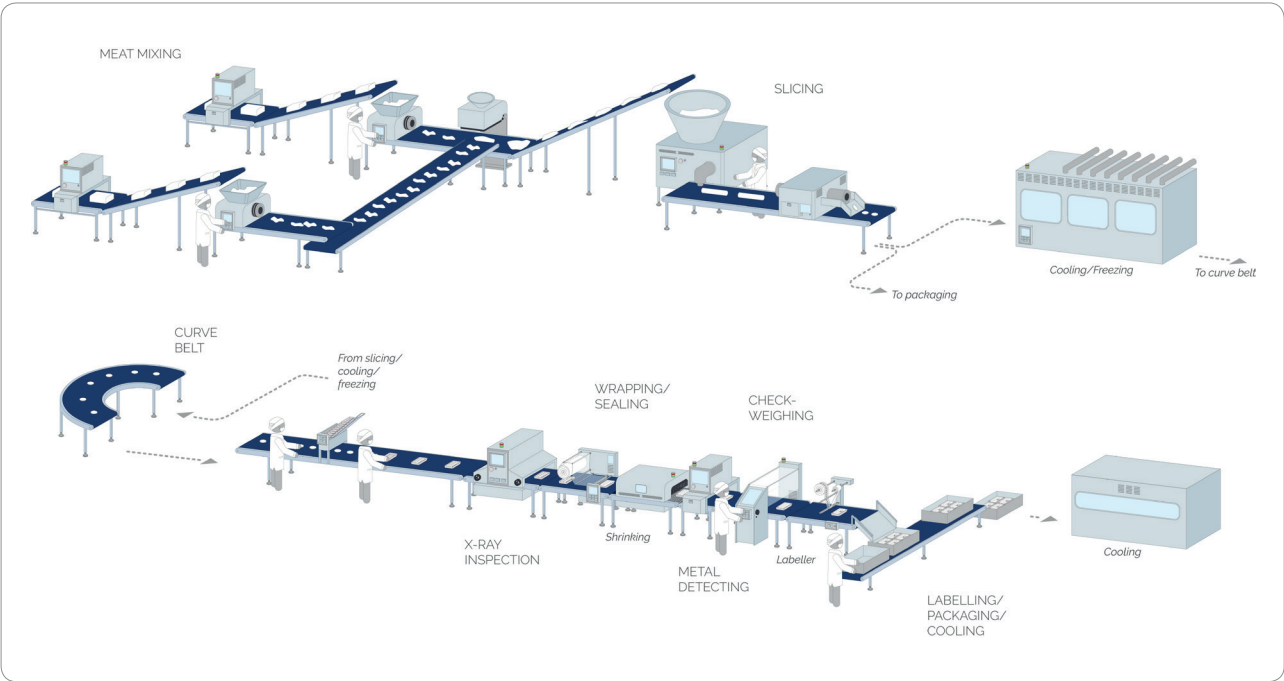
KEY FEATURES

+

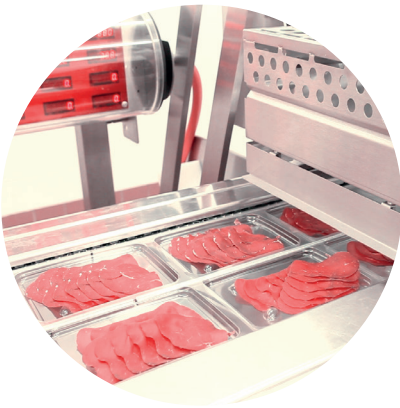
BENEFITS

| | |
|---|---|
| Highest resistance to cleaning and sanitizing | > Total hygiene and food safety |
| Fray-free edges | > Product safety and no contamination |
| Suitable for high speeds | > Perfect positioning Increased output |
| Resistance to low temperature | > Long service life |

Industrial line for sausage / slicing processing



Packaging



The wide range of Chiorino belts assures **safe and hygienic packaging** of meat & poultry products.

HP® elastic belts

The **elastic HP® fibreless** and **highly resilient** food belts can be **easily fitted** on spreaders or electronic check-weighers.

Total feeding precision

Quick and easy to fit and replace without tensioning devices

Fully HACCP compliant thanks to their extraordinary resistance to cleaning systems

Blue surface and a wide range of patterns

MF™ seamless belts

CHIORINO manufactures **truly endless** belts for vertical form-fill seal machines, with different coverings according to the type of packaging used.

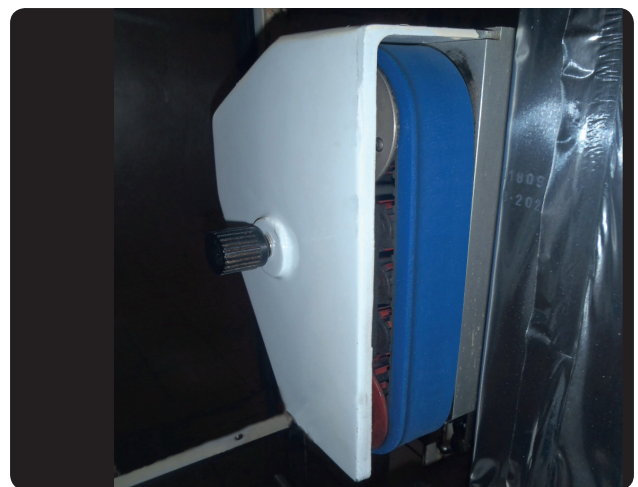
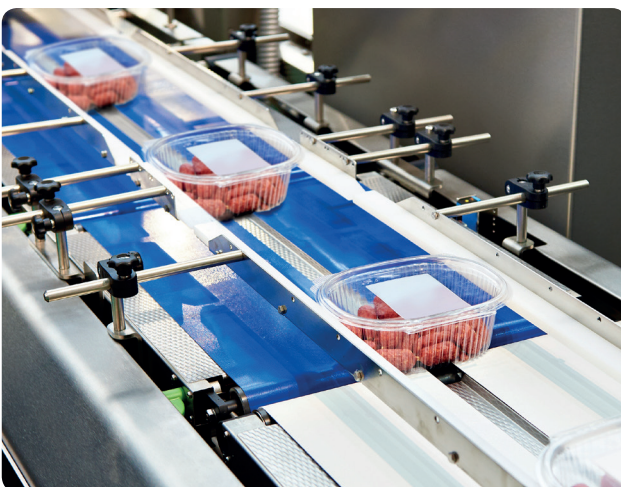
Silicone blue: food grade belts ideal for aseptic packagings

HS W white: both for PVC and polyethylene films and abrasive packagings (paper, fabric, etc.)

R purple red: both for PVC and polyethylene films and abrasive packagings (paper, fabric, etc.)

B beige: for very abrasive packagings.

Available with **special executions:** countersunks, punched holes, diagonal slots, groovings, application of polyurethane or rubber timing belts.



Technical data

| Code | Type | Conveying surface coating | | Perm. antistatic | Total thickness | Knife edge min. radius ¹ | Min. pulley diameter ¹ | Pull for 1% elong. ² | Max. admiss. pull | Temperature resistance °C | | Coeff. of friction ³ |
|------|------|---------------------------|--------|------------------|-----------------|-------------------------------------|-----------------------------------|---------------------------------|-------------------|---------------------------|------|---------------------------------|
| | | Material | Colour | | | | | | | min. | max. | |

Premium line

| | | | | | | | | | | | | |
|---------|--------------------------|---------|-------|---|-----|---|----|----|----|-----|-----|----|
| NA-790 | EL2-U10 HP W | TPU HP® | white | | 1.0 | - | 10 | 2 | 2 | -30 | 60 | MF |
| NA-785 | EL2-U10 HP blue | TPU HP® | blue | | 1.0 | - | 10 | 2 | 2 | -30 | 60 | MF |
| NA-1089 | EL3-U15 HP PN blue | TPU HP® | blue | | 1.5 | - | 10 | 3 | 3 | -30 | 60 | MF |
| NA-899 | EL4-U20 HP blue | TPU HP® | blue | | 2.0 | - | 10 | 4 | 4 | -30 | 60 | MF |
| NA-948 | 1M5 U0-U2 HP W A | TPU HP® | white | • | 0.7 | 3 | 6 | 5 | 5 | -30 | 110 | MF |
| NA-946 | 1M5 U0-U2 HP W S A | TPU HP® | white | • | 0.7 | 3 | 6 | 5 | 5 | -30 | 110 | HF |
| NA-1052 | 1M5 U0-U2 HP blue S A | TPU HP® | blue | • | 0.7 | 3 | 6 | 5 | 5 | -30 | 110 | HF |
| NA-947 | 1M5 U0-U2 HP VL blue A | TPU HP® | blue | • | 0.7 | 3 | 6 | 5 | 5 | -30 | 110 | MF |
| NA-1191 | 1M5 U3-U3 HP FL/FM W | TPU HP® | white | | 1.4 | - | 10 | 5 | 5 | -30 | 110 | MF |
| NA-983 | 1T6 U0-U2 HP W A | TPU HP® | white | • | 0.8 | 4 | 8 | 6 | 6 | -30 | 110 | MF |
| NA-789 | 2M5 U0-U2 HP W A | TPU HP® | white | • | 1.3 | 4 | 8 | 6 | 12 | -30 | 110 | MF |
| NA-1067 | 2M5 U0-U2 HP blue A | TPU HP® | blue | • | 1.3 | 4 | 8 | 6 | 12 | -30 | 110 | MF |
| NA-913 | 2M5 U0-U2 HP W S A | TPU HP® | white | • | 1.3 | 4 | 8 | 6 | 12 | -30 | 110 | HF |
| NA-1054 | 2M5 U0-U2 HP blue S A | TPU HP® | blue | • | 1.3 | 4 | 8 | 6 | 12 | -30 | 110 | HF |
| NA-1410 | 2M5 U0-U2 HP VL blue | TPU HP® | blue | | 1.3 | 4 | 8 | 5 | 10 | -30 | 110 | MF |
| NA-786 | 2M5 U0-U2 HP VL blue A | TPU HP® | blue | • | 1.3 | 4 | 8 | 6 | 12 | -30 | 110 | MF |
| NA-851 | 2M5 U0-U2 HP VL blue A | TPU HP® | blue | • | 1.5 | - | 10 | 6 | 12 | -30 | 110 | MF |
| NA-1193 | 2M5 U0-U7 HP LG blue S A | TPU HP® | blue | • | 1.8 | - | 10 | 6 | 12 | -30 | 110 | HF |
| NA-1130 | 2M5 U0-U8 HP CC blue | TPU HP® | white | • | 2.9 | - | 10 | 6 | 12 | -30 | 110 | HF |
| NA-1324 | 2M5 U0-U8 HP STL blue | TPU HP® | white | • | 2.9 | - | 15 | 6 | 12 | -30 | 110 | HF |
| NA-1087 | 2M5 U0-U15 HP ST W A | TPU HP® | white | • | 3.5 | - | 50 | 5 | 10 | -30 | 110 | MF |
| NA-992 | 2T12 U0-U2 HP VL W A | TPU HP® | white | • | 1.6 | 6 | 12 | 12 | 24 | -30 | 110 | MF |
| NA-1020 | 3M8 U0-U5 HP W A | TPU HP® | white | • | 2.3 | - | 60 | 10 | 20 | -30 | 110 | MF |
| NA-1083 | 3M8 U0-U5 HP blue A | TPU HP® | blue | • | 2.3 | - | 60 | 10 | 20 | -30 | 110 | MF |

Homogeneous belts

| | | | | | | | | | | | | |
|-------------|-----------------------|---------|------|--|-----|---|----|----|----|-----|-----|----|
| NA-1366A | HP Compact 15 blue | TPU HP® | blue | | 1.5 | - | 25 | 5 | 10 | -30 | 110 | MF |
| NA-1359A | HP Compact 20 blue | TPU HP® | blue | | 2.0 | - | 50 | 8 | 16 | -30 | 110 | MF |
| NA-1207A | HP Compact 25 blue | TPU HP® | blue | | 2.5 | - | 50 | 8 | 16 | -30 | 110 | MF |
| NA-1294A | HP Compact 25 PN blue | TPU HP® | blue | | 2.5 | - | 50 | 8 | 16 | -30 | 110 | MF |
| NA-1328A | HP Compact 25 RG blue | TPU HP® | blue | | 2.5 | - | 50 | 8 | 16 | -30 | 110 | MF |
| NA-1328A RG | HP Compact RG 25 blue | TPU HP® | blue | | 2.5 | - | 50 | 8 | 16 | -30 | 110 | MF |
| NA-1257A | HP Compact 25 VL blue | TPU HP® | blue | | 2.5 | - | 50 | 8 | 16 | -30 | 110 | MF |
| NA-1307A | HP Compact 40 blue | TPU HP® | blue | | 4.0 | - | 80 | 15 | 30 | -30 | 110 | MF |

Positive drive homogeneous belts

| Code | Type | Material | Colour | Total thickness | Pitch | Tooth section | Tooth length | Min. diameter ¹ | Pull for 1% elong. N/mm | Temperature resistance | |
|--------------|-----------------------------------|----------|--------|-----------------|-------|---------------|--------------|----------------------------|-------------------------|------------------------|---------|
| | | | | mm | mm | mm | mm | mm | | min. °C | max. °C |
| NA-1481F_D6 | HP Compact Minidrive 15/20 A blue | TPU HP® | blue | 1.5 | 20 | 6 x 4 | 72 | 20 | 10 | -30 | 90 |
| NA-1366F_D6 | HP Compact Minidrive 15/20 blue | TPU HP® | blue | 1.5 | 20 | 6 x 4 | 72 | 25 | 5 | -30 | 90 |
| NA-1359C_D13 | HP Compact Drive 20/40 blue | TPU HP® | blue | 2.0 | 40 | 13 x 8 | 72 | 80 | 8 | -30 | 90 |
| NA-1207C_D13 | HP Compact Drive 25/40 blue | TPU HP® | blue | 2.5 | 40 | 13 x 8 | 72 | 80 | 8 | -30 | 90 |
| NA-1294C_D13 | HP Compact Drive 25/40 PN blue | TPU HP® | blue | 2.5 | 40 | 13 x 8 | 72 | 80 | 8 | -30 | 90 |
| NA-1328C_D13 | HP Compact Drive 25/40 RG blue | TPU HP® | blue | 2.5 | 40 | 13 x 8 | 72 | 80 | 8 | -30 | 90 |
| NA-1257C_D13 | HP Compact Drive 25/40 VL blue | TPU HP® | blue | 2.5 | 40 | 13 x 8 | 72 | 80 | 8 | -30 | 90 |
| NA-1307C_D13 | HP Compact Drive 40/40 blue | TPU HP® | blue | 4.0 | 40 | 13 x 8 | 72 | 80 | 15 | -30 | 90 |

Round belts

| Code | Type | Material | Colour | Surface | Hardness | Diameter | Min. pulley diameter | Pull for 8% elongation | Temperature resistance | |
|--------|----------------|----------|--------|---------|----------|----------|----------------------|------------------------|------------------------|---------|
| | | | | | Sh.A | | | | min. °C | max. °C |
| ES-603 | RU-3 HP blue | TPU HP® | blue | smooth | 85 | 3 | 20 | 15 | -20 | 60 |
| ES-604 | RU-4 HP blue | TPU HP® | blue | smooth | 85 | 4 | 35 | 26 | -20 | 60 |
| ES-605 | RU-5 HP blue | TPU HP® | blue | smooth | 85 | 5 | 45 | 42 | -20 | 60 |
| ES-606 | RU-6 HP blue | TPU HP® | blue | smooth | 85 | 6 | 50 | 60 | -20 | 60 |
| ES-607 | RU-8 HP blue | TPU HP® | blue | smooth | 85 | 8 | 70 | 110 | -20 | 60 |
| ES-719 | RU-4 R HP blue | TPU HP® | blue | rough | 85 | 4 | 35 | 26 | -20 | 60 |
| ES-720 | RU-6 R HP blue | TPU HP® | blue | rough | 85 | 6 | 50 | 60 | -20 | 60 |

X-wide belts

| Code | Type | Conveying surface coating | | Perm. antistatic | Total thickness | Knife edge min. radius ¹ | Min. pulley diameter ¹ | Pull for 1% elong. ² | Max. admiss. pull | Temperature resistance °C | | Coeff. of friction ³ |
|---------|-----------------------|---------------------------|--------|------------------|-----------------|-------------------------------------|-----------------------------------|---------------------------------|-------------------|---------------------------|------|---------------------------------|
| | | Material | Colour | | | | | | | min. | max. | |
| NA-1447 | 1T6 U0-U2 W A XW-P | TPU | white | • | 0.8 | 4 | 8 | 6 | 6 | -30 | 110 | MF |
| NA-1448 | 2M5 U0-U2 W A XW-P | TPU | white | • | 1.3 | 4 | 8 | 6 | 12 | -30 | 110 | MF |
| NA-1426 | 2M5 U0-U2 blue A XW-P | TPU | blue | • | 1.3 | 4 | 8 | 6 | 12 | -30 | 110 | MF |

¹ Minimum radius / pulley diameter is dependent on the joint recommended by Chiorino.

² EL series: pull for 8% elongation.

³ Conveying surface coefficient of friction: **LF** low, **MF** medium, **HF** high

| Code | Type | Conveying surface coating | | Perm. antistatic | Total thickness | Knife edge min. radius ¹ | Min. pulley diameter ¹ | Pull for 1% elong. ² | Max. admiss. pull | Temperature resistance °C | | Coeff. of friction ³ |
|------|------|---------------------------|--------|------------------|-----------------|-------------------------------------|-----------------------------------|---------------------------------|-------------------|---------------------------|------|---------------------------------|
| | | Material | Colour | | | | | | | min. | max. | |

Performance line

| | | | | | | | | | | | | |
|---------|--------------------|-----|-----------|---|-----|---|----|----|----|-----|-----|----|
| NA-945 | 1M5 U0-U2 W A | TPU | white | • | 0.7 | 3 | 6 | 5 | 5 | -20 | 100 | LF |
| NA-549 | 2M5 U0-U1 W S A | TPU | white | • | 1.3 | 4 | 8 | 6 | 12 | -20 | 100 | HF |
| NA-1069 | 2M5 U0-U1 blue S A | TPU | blue | • | 1.3 | 4 | 8 | 6 | 12 | -20 | 100 | HF |
| NA-696 | 2M5 U0-U2 LF W A | TPU | white | • | 1.3 | 4 | 8 | 6 | 12 | -20 | 100 | LF |
| NA-1290 | 2M6 U0-U2 GS W | TPU | white | | 1.3 | 6 | 12 | 6 | 12 | -20 | 100 | MF |
| NA-1451 | 2M6 U0-U2 GS DB | TPU | dark blue | | 1.3 | 6 | 12 | 6 | 12 | -20 | 100 | MF |
| NA-801 | 2M12 U0-U3 R W A | TPU | white | • | 1.7 | - | 40 | 12 | 24 | -20 | 100 | LF |
| NA-887 | 2M12 U0-U10 W A | TPU | white | • | 2.4 | - | 50 | 12 | 24 | -20 | 100 | LF |
| NA-241 | 2M12 V5-V-U10 W | TPU | white | • | 3.5 | - | 80 | 12 | 24 | -10 | 60 | LF |
| NA-1010 | 2M12 U0-U15 LT W A | TPU | white | • | 6.0 | - | 50 | 12 | 24 | -20 | 100 | MF |

FD Food Duty

| | | | | | | | | | | | | |
|---------|-------------------|-----|------------|--|-----|---|----|----|----|-----|----|----|
| NA-1325 | 2MT12 U0-U3 FD2.3 | TPU | light blue | | 2.3 | - | 60 | 12 | 24 | -10 | 80 | MF |
| NA-1333 | 2T12 U0-U3 FD2.5 | TPU | light blue | | 2.5 | - | 50 | 12 | 24 | -10 | 80 | MF |
| NA-1332 | 2T12 V5-U3 FD2.8 | TPU | light blue | | 2.8 | - | 80 | 12 | 24 | -10 | 80 | MF |

DET Detectable belts

| | | | | | | | | | | | | |
|---------|-----------------------|-----|-----------|---|-----|---|----|----|----|-----|-----|----|
| NA-1379 | EL4-U20 blue DET | TPU | dark blue | | 2.0 | - | 10 | 4 | 4 | -30 | 60 | MF |
| NA-1323 | EL6-U30 blue DET | TPU | dark blue | | 3.0 | - | 20 | 6 | 6 | -30 | 60 | MF |
| NA-1373 | 2M5 U0-U2 blue DET | TPU | dark blue | • | 1.3 | 4 | 8 | 5 | 10 | -30 | 100 | MF |
| NA-1427 | 2M5 U0-U2 PN blue DET | TPU | dark blue | • | 1.6 | 4 | 8 | 5 | 10 | -30 | 100 | MF |
| NA-1474 | 2MT5 U0-U2 blue DET | TPU | dark blue | • | 1.4 | 4 | 8 | 5 | 10 | -30 | 100 | MF |
| NA-1374 | 2T12 U0-U2 blue DET | TPU | dark blue | • | 1.6 | - | 25 | 12 | 24 | -30 | 100 | MF |
| NA-1406 | 3M8 U0-U5 blue DET | TPU | dark blue | • | 2.3 | - | 60 | 8 | 16 | -30 | 100 | MF |



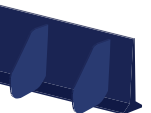

DET Detectable positive drive belts

| Code | Type | Material | Colour | Total thickness | Pitch | Tooth section | Tooth length | Min. diameter ¹ | Pull for 1% elongation | Temperature resistance | |
|--------------|------------------------------------|----------|-----------|-----------------|-------|---------------|--------------|----------------------------|------------------------|------------------------|---------|
| | | | | | | | | | | min. °C | max. °C |
| NA-1482F_D6 | Compact Minidrive 15/20 A blue DET | TPU | dark blue | 1.5 | 20 | 6 x 4 | 72 | 20 | 10 | -30 | 90 |
| NA-1461F_D6 | Compact Minidrive 15/20 blue DET | TPU | dark blue | 1.5 | 20 | 6 x 4 | 72 | 25 | 5 | -30 | 90 |
| NA-1460C_D13 | Compact Drive 25/40 blue DET | TPU | dark blue | 2.5 | 40 | 13 x 8 | 72 | 80 | 8 | -30 | 90 |

DET Detectable round belts

| Code | Type | Material | Colour | Surface | Hardness | Diameter | Min. pulley diam. | Pull for 8% elong. | Temperature resistance | |
|--------|---------------|----------|-----------|---------|----------|----------|-------------------|--------------------|------------------------|---------|
| | | | | | | | | | min. °C | max. °C |
| ES-790 | RU-4 blue DET | TPU | dark blue | smooth | 85 | 4 | 35 | 30 | -20 | 60 |
| ES-791 | RU-6 blue DET | TPU | dark blue | smooth | 85 | 6 | 50 | 70 | -20 | 60 |
| ES-792 | RU-8 blue DET | TPU | dark blue | smooth | 85 | 8 | 70 | 130 | -20 | 60 |

HP Transversal profiles and sidewalls

| | | | | | | | | | |
|---|-------------------------------------|-------------------------------------|------------|---------------------------|----------|-------------------------|---------------------------------|---|----------------------------------|
| | | Code | Type | Dimensions b x h mm | Material | Hardness Sh A / Sh D | Min. transversal pitch mm | Min. transversal diameter ⁴ mm | |
|  | ES-543 | L20 U HP blue | 10 x 20 | TPU HP® | 70 Sh A | 40 | 40 | | |
| | ES-546 | L30 U HP blue | 10 x 30 | TPU HP® | 70 Sh A | 40 | 40 | | |
| | ES-549 | L40 U HP blue | 10 x 40 | TPU HP® | 70 Sh A | 40 | 40 | | |
| | ES-535 | L50 U HP blue | 10 x 50 | TPU HP® | 70 Sh A | 40 | 40 | | |
| | ES-538 | L80 U HP blue | 10 x 80 | TPU HP® | 70 Sh A | 40 | 40 | | |
| | ES-731 | L80 U HP blue 55D | 10 x 80 | TPU HP® | 55 Sh D | 40 | 40 | | |
|  | ES-563 | T20 U HP blue | 10 x 20 | TPU HP® | 70 Sh A | 40 | 40 | | |
| | ES-560 | T30 U HP blue | 10 x 30 | TPU HP® | 70 Sh A | 40 | 40 | | |
| | ES-557 | T40 U HP blue | 10 x 40 | TPU HP® | 70 Sh A | 40 | 40 | | |
| | ES-554 | T50 U HP blue | 10 x 50 | TPU HP® | 70 Sh A | 40 | 40 | | |
| | ES-534 | T60 U HP blue | 10 x 60 | TPU HP® | 70 Sh A | 40 | 40 | | |
| | ES-713 | T50 U HP blue 55D | 10 x 50 | TPU HP® | 55 Sh D | 40 | 40 | | |
| | ES-793 | T100 U HP blue 55MD ⁵ | 10 x 100 | TPU HP® | 55 Sh D | 40 | 50 | | |
| | ES-785 | T120 U HP blue 55MD ⁵ | 10 x 120 | TPU HP® | 55 Sh D | 40 | 50 | | |
| | ES-856 | T80 U HP RG blue 55MD ⁵ | 10 x 80 | TPU HP® | 55 Sh D | 40 | 50 | | |
| | ES-855 | T100 U HP RG blue 55MD ⁵ | 10 x 100 | TPU HP® | 55 Sh D | 40 | 50 | | |
| ES-854 | T120 U HP RG blue 55MD ⁵ | 10 x 120 | TPU HP® | 55 Sh D | 40 | 50 | | | |
|  | ES-840 | TS80 U HP blue 55MD ⁵ | 10 x 80 | TPU HP® | 55 Sh D | 200-250 | 40 | | |
| | ES-841 | TS100 U HP blue 55MD ⁵ | 10 x 100 | TPU HP® | 55 Sh D | 200-250 | 40 | | |
| | ES-842 | TS120 U HP blue 55MD ⁵ | 10 x 120 | TPU HP® | 55 Sh D | 200-250 | 40 | | |
|  | Code | Type | Dimensions | | | Material | Hardness | Thickness | Minimum diameter ⁴ |
| | | | Pitch | Width | Height | | | | |
| | | | mm | mm | mm | | Sh A | mm | mm |
| | ES-707 | C-U 10/20 HP blue | 24 | 22 | 20 | TPU HP® | 85 | 1.6 | 50 |
| | ES-708 | C-U 10/30 HP blue | 24 | 22 | 30 | TPU HP® | 85 | 1.6 | 70 |
| | ES-709 | C-U 10/40 HP blue | 24 | 22 | 40 | TPU HP® | 85 | 1.6 | 100 |
| | ES-710 | C-U 10/50 HP blue | 24 | 22 | 50 | TPU HP® | 85 | 1.6 | 120 |
| | ES-711 | C-U 20/60 HP blue | 50 | 42 | 60 | TPU HP® | 85 | 1.6 | 150 |
| ES-712 | C-U 20/80 HP blue | 50 | 42 | 80 | TPU HP® | 85 | 1.6 | 190 | |

⁴ Minimum pulley diameters referred to environment conditions of 20°C.

⁵ Available in 800 mm length bars.